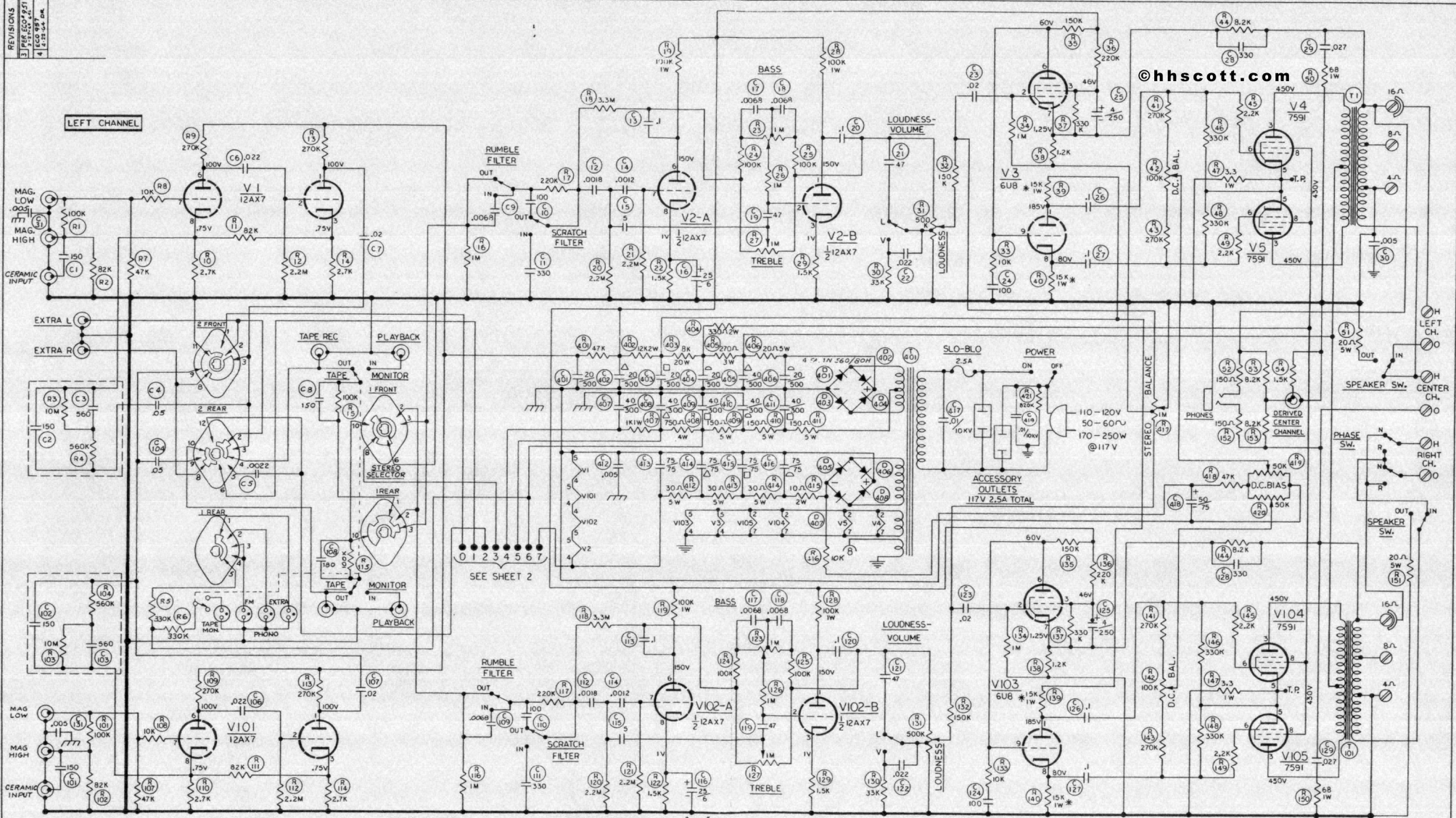


REVISIONS
 3 1 PFL 250 7-27
 4 1 ESO 887 7-28
 1 1 ESO 887 7-28



©hhsctt.com

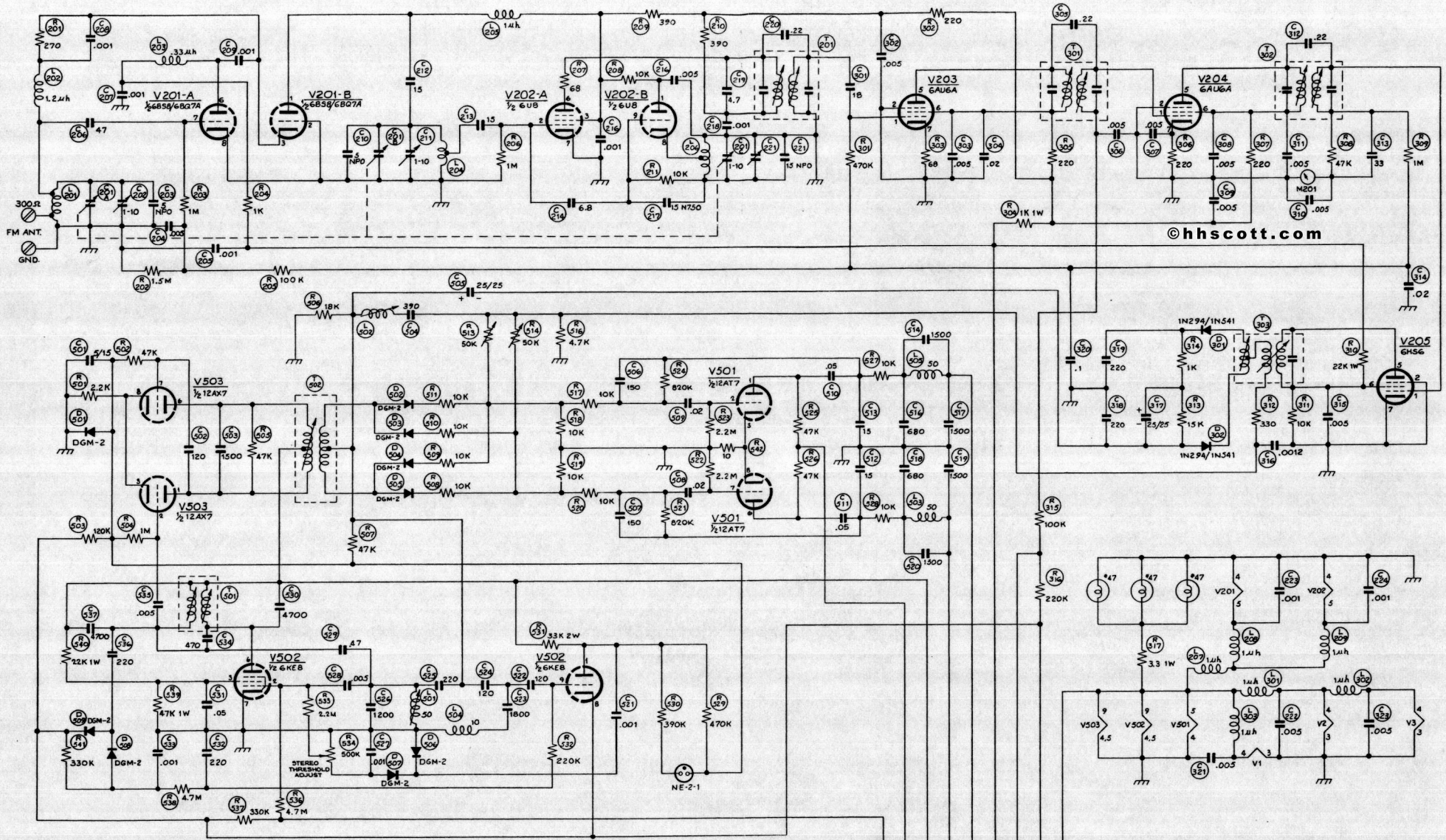
INPUT SELECTOR POSITION	FUNCTION
1	EXTRA
2	PHONO
3	FM
4	SUB CH. FILTER

STEREO SELECTOR POSITION	FUNCTION
1	BAL LEFT
2	BAL RIGHT
3	MONOPHONIC RECORDS
4	STEREO
5	REVERSE STEREO
6	LEFT INPUT
7	RIGHT INPUT

THE FOLLOWING CONTROLS IN "LEFT" CHANNEL ARE MECHANICALLY GANGED WITH IDENTICAL CONTROLS IN "RIGHT" CHANNEL:
 1 - INPUT SELECTOR
 2 - RUMBLE FILTER
 3 - SCRATCH FILTER
 4 - VOLUME - LOUDNESS
 5 - LOUDNESS
 6 - TAPE MONITOR

NOTE:
 1 SWITCHES SHOWN IN MAX. C.W. POSITION
 2 ALL RESISTORS 1/2W UNLESS NOTED
 3 ALL VOLTAGES D.C. 15% MEASURED WITH V.O.M.
 4 NO INPUT SIGNAL AND 117V LINE
 5 * MATCHED RESISTORS

SHEET 1 of 2



© hhscoff.com

HIGHEST SERIES NO'S.

C 31	C131	C224	C323	C419	C537
R 54	R133	R211	R317	R421	R542
T 1	T101	T201	T303	T401	T502
		L209	L303	L505	
			D302	D408	D509

OUT-R512, R516, R555

3 4 6 1 2 3 0 7 8
SEE SHEET 1

SHEET 2 OF 2

SCALE: -	CIRCUIT DIAGRAM	3-24-64
H. H. SCOTT, INC. MAYNARD, MASS., U. S. A.		
DR. G.A.L.	ENG. R.W.Z.	DWG. NO. 340B-C1
CH.	PROD.	SUB. 4